

WesternBright™ ECL Spray

Sensitive HRP substrate for chemiluminescent Western blots imaged using film

WesternBright ECL substrate is optimized for chemiluminescent Western blots imaged using film. **WesternBright ECL Spray** gives you both components of WesternBright ECL in one convenient spray device. No measuring or mixing required – just spray the reagent onto a blot and image. WesternBright ECL's strong signal allows you to use up to ten times less antibody than other substrates, so you can conserve your precious antibodies and samples. Additionally, WesternBright ECL Spray eliminates pre-measuring and mixing steps so you use fewer pipettes, tips and tubes resulting in additional savings and reduced waste.



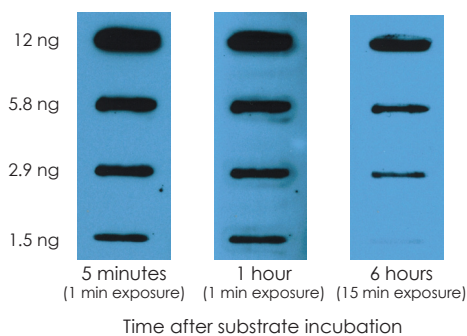
- Easy-to-use spray
- 4X more sensitive than competitive substrates
- Signal that lasts more than 6 hours
- Use 10X less antibody



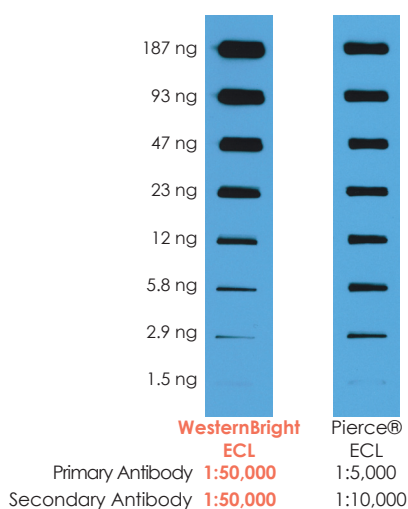
Features

- Easy to use – Just point and spray. No pipetting, measuring or mixing required
- High sensitivity – Detect low pg protein amounts
- Signal that lasts – Image blot up to 6 hours after substrate incubation
- Stronger signal than Amersham™ or Pierce™ ECL
- Use up to ten times less antibody

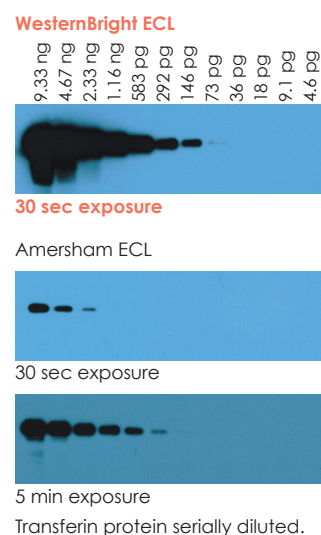
Long-lasting signal



Use 10x less antibody



Shorter exposure times



Ordering Information

Catalog Number	Product	Size
K-12049-D50	WesternBright™ ECL Spray	500 ml

Related Products

L-07014-100	LucentBlue™ X-ray film	8 x 10" sheets	100 sheets
L-07032-005	Incubation Tray, Traditional black body with clear lid	6 x 9 cm	5/pack
R-05051-250	APC-goat-anti-rabbit IgG conjugate		250 µl
R-05052-250	RPE-goat-anti-mouse IgG conjugate		250 µl

Advansta Corporation

1505 Adams Drive, Suite B1 | Menlo Park, CA 94025

Tel: 650.325.1980 | Fax: 650.325.1904 | Email: sales@advansta.com

Product information: www.advansta.com/WesternBright-ECL-Spray

Copyright © 2011-2014 Advansta. All rights reserved. The Advansta logo is a registered trademark of the Company. WesternBright™ and LucentBlue™ are trademarks of the Company. All other trademarks, service marks and tradenames appearing in this brochure are the property of their respective owners.

www.advansta.com

