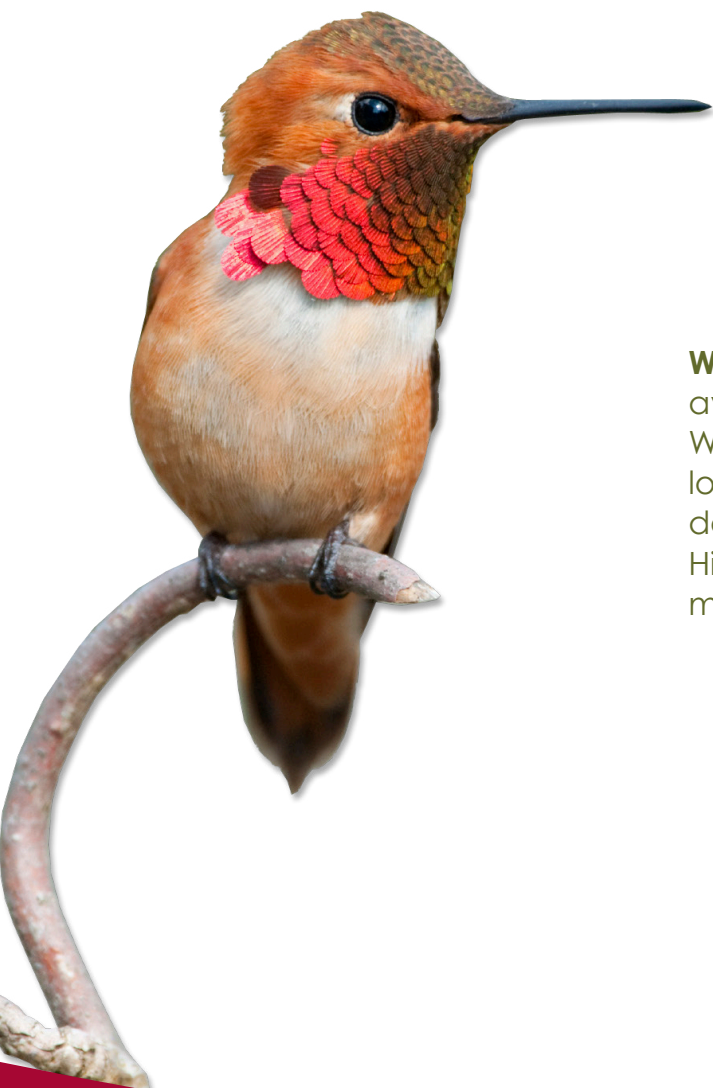


# WesternBright™ Sirius™

Most sensitive substrate for chemiluminescent Western blotting



**WesternBright Sirius** is the most sensitive HRP substrate available from Advansta for chemiluminescent Western blotting. With attomole sensitivity and a long-lasting signal, WesternBright Sirius allows you to detect bands not visualized with other substrates. High signal-to-noise and a large dynamic range make it ideal for quantifying low-intensity bands.

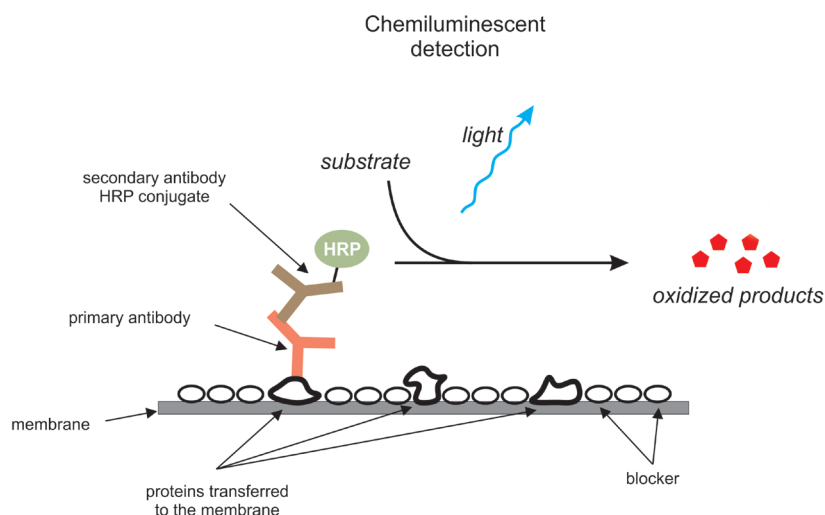
# WesternBright™ Sirius™

Most sensitive substrate for chemiluminescent Western blotting

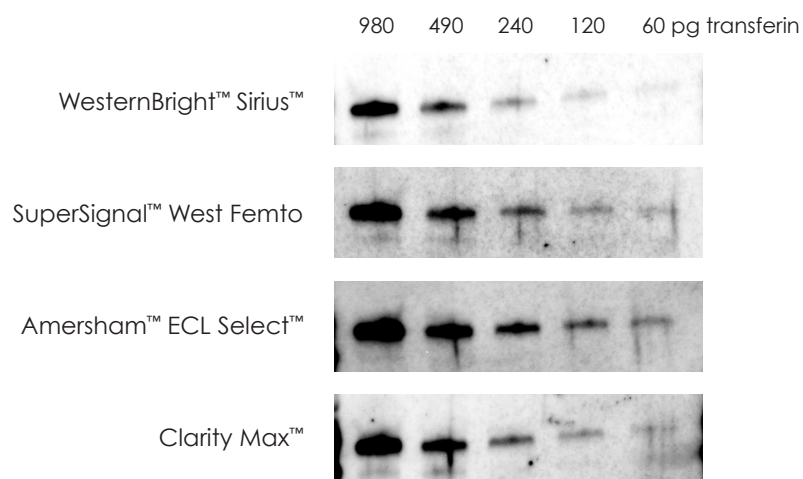
WesternBright Sirius allows you to detect low-abundance proteins, with a strong, long-lasting and quantitative signal.

## Chemiluminescent detection

WesternBright Sirius is the most sensitive chemiluminescent HRP substrate offered by **Advansta**, specially engineered to produce an extremely strong signal to detect low-abundance proteins and to work with very low antibody concentrations.



## High sensitivity, low background



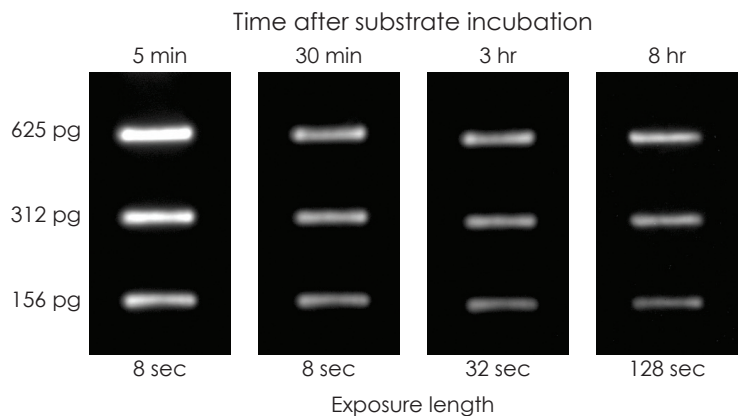
**Sensitivity of chemiluminescent substrates from various suppliers.** 2-fold serial dilutions of purified transferrin were electrophoresed by SDS-PAGE then transferred to a PVDF membrane. The blots were blocked then probed with a rabbit anti-transferrin primary antibody followed by an HRP-conjugated anti-rabbit secondary antibody. Various substrates were applied to the membranes then signal was measured with a CCD camera.

# WesternBright™ Sirius™

Most sensitive substrate for chemiluminescent Western blotting

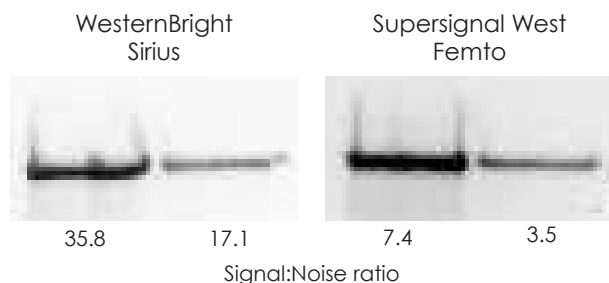
## Image blots hours after substrate incubation

A slot blot containing a serial dilution of an HRP-conjugated antibody was incubated with WesternBright Sirius, and imaged at the times indicated. After 8 hours, the bands are still easily detected with only a 2 minute exposure.



## Low background for better band quantification

WesternBright Sirius provides sensitive detection combined with extremely low background. Duplicate Western blots were conducted to analyze samples of plasma, diluted either 1:100 (left lanes) or 1:600 (right lanes) in PBS. The blots were probed with a goat antisera primary antibody, and an HRP-conjugated secondary antibody. After detection with either WesternBright Sirius or SuperSignal® West Femto (Thermo Scientific), the blots were imaged for 8.3 minutes. The signal-to-noise ratio is shown for each band.



# WesternBright™ Sirius™

Most sensitive substrate for chemiluminescent Western blotting

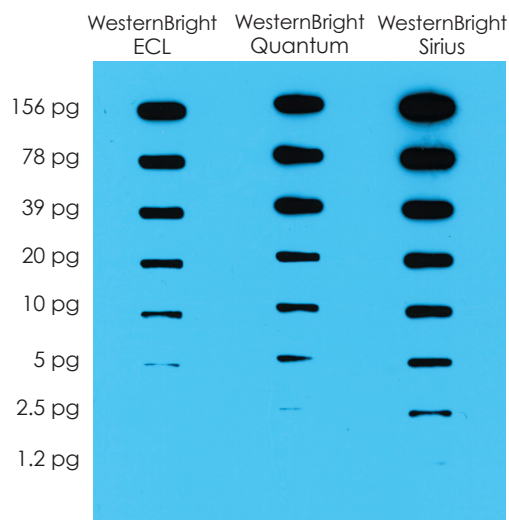
**WesternBright Sirius** is designed for sensitive detection and low antibody concentrations. With low background and a strong, long-lasting chemiluminescent signal, WesternBright Sirius is the best choice for quantifying low-abundance bands.

## Features

- Detect low-abundance proteins
- Low background for high signal-to-noise ratio
- Long-lasting signal for flexible imaging
- Image chemiluminescence by CCD or film



## The highest sensitivity



Slot blots containing serial dilutions of an HRP-conjugated antibody were incubated with WesternBright ECL, WesternBright Quantum or WesternBright Sirius and detected with a 2-minute exposure to film.

## Ordering Information

Catalog Number	Product		Size
K-12043-C20	WesternBright™ Sirius™ Western Blotting HRP Substrate Trial kit size	For 200 cm <sup>2</sup> membrane	20 ml
K-12043-D10	WesternBright™ Sirius™ Western Blotting HRP Substrate	For 1000 cm <sup>2</sup> membrane	100 ml
K-12043-C20	WesternBright™ Sirius™ Western Blotting HRP Substrate	For 2000 cm <sup>2</sup> membrane	200 ml

## Related Products

L-07001-010	Background Quenching Sheets		10 sheets
L-07013-100	LucentBlue™ X-ray film	5 x 7" sheets	100 sheets
L-08001-010	Low-Fluorescence PVDF Transfer Membrane	7 x 9 cm	10 sheets
L-08003-010	Nitrocellulose Transfer Membrane 0.22 µm	8 x 10 cm	10 sheets
R-05071-500	Goat-anti-mouse HRP-conjugated secondary antibody		500 µl
R-05072-500	Goat-anti-rabbit HRP-conjugated secondary antibody		500 µl

## Advansta Corporation

1505 Adams Drive, Suite B1 | Menlo Park, CA 94025

Tel: 650.325.1980 | Fax: 650.325.1904 | Email: [sales@advansta.com](mailto:sales@advansta.com)

Product information: [www.advansta.com/WesternBright\\_Sirius](http://www.advansta.com/WesternBright_Sirius)

Copyright © 2011-2016 Advansta. All rights reserved. The Advansta logo is a registered trademark of the Company. WesternBright™ Sirius™ and LucentBlue™ are trademarks of the Company. All other trademarks, service marks and tradenames appearing in this brochure are the property of their respective owners.

[www.advansta.com](http://www.advansta.com)

